

Kirklees (North)

Policies Map (Rejected Options)
Draft Local Plan - September 2015

Green Belt and Green Infrastructure

- Peak District National Park
- Green Belt
- Strategic Green Infrastructure Proposal
- Urban Greenspace
- Local Greenspace

Housing, Employment & Other Significant Development

- Employment
- Housing
- Mixed Use
- Land at Storthes Hall
- Gypsies And Travellers & Travelling Showpeople

Minerals & Waste

- Mineral Extraction Site

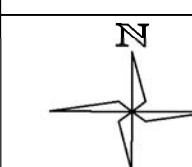
Additional Rejected Options

- Local Wildlife Site
- Safeguarded Land

Please note:

(i) Only sites of 0.4 ha and over are shown.
Site references relate to policies and paragraphs in Written Statement

(ii) A number of the rejected-site options shown on this map overlap. Besides occurring between different option types, overlaps are sometimes evident between sites of the same option, especially housing. Not all such overlaps have been comprehensively labelled here and the interpretation of actual site boundaries can, therefore, be problematic (in some instances, some portions of sites may be shown without labelling at all). Where interpretation of site boundaries proves difficult, further details can be found with reference to the Written Statement.

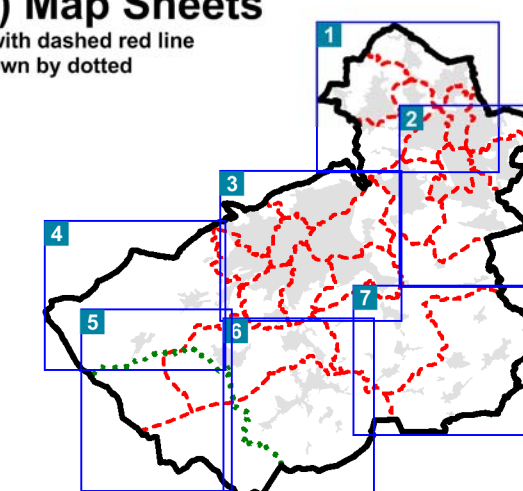


Map scale: 1:15,000 @ A1

© Crown Copyright and database
right 2015. Ordnance Survey 100019241

Index to (A1) Map Sheets

Electoral wards shown with dashed red line
Peak Park boundary shown by dotted
green line



0 2
kilometres

Bradford District

Leeds District

Calderdale District

BATLEY

LIVERSEDGE

HECKMONDWIKE

DEWSBURY